

R A D I O N I C S

D8112 Zonex System Program/Account Record Sheet

Account Name _____ Account Number _____

8112:AUX File Name: 8112A: _____			Zonex Subhandler Program		
2.1 Zonex	Yes or No	2.5 Z1 Points	2.8 Z4 Points	2.11 Z7 Points	
2.2 Hrzntl	Yes or No	2.6 Z2 Points	2.9 Z5 Points	2.12 Z8 Points	
2.3 PText	Yes or No	2.7 Z3 Points	2.10 Z6 Points		

NOTE: The "8126 Switches" column for each zone indicates settings for D8126 POPITs only.
 In Horizontal Mode: POPITs 1-8 for each zone must be connected to POPEX #1 (terminal 28).
 POPITs 9-16 for each zone must be connected to POPEX #2 (terminal 27).
 In Vertical Mode: All POPITs for zones 1-4 must be connected to POPEX #1 (terminal 28).
 All POPITs for zones 5-8 must be connected to POPEX #2 (terminal 27).

Switch Setting Code
 | - (dash) Switch OFF |
 | # (number) Switch ON |

8112:PText Files

MASTER ZONE 1 File Name: 8112P: _____
 Protection: _____
 Notes: _____

D5100 Display	D1252 Display	PTEXT	8126 Switches		LOCATION
			Hrzntl	Vert	
MSTR 1	ZN 100				
1 Z1	ZN 101		123456	123456	
2 Z1	ZN 102		12345-	12345-	
3 Z1	ZN 103		1234-6	1234-6	
4 Z1	ZN 104		1234--	1234--	
5 Z1	ZN 105		123-56	123-56	
6 Z1	ZN 106		123-5-	123-5-	
7 Z1	ZN 107		123--6	123--6	
8 Z1	ZN 108		123---	123---	
9 Z1	ZN 109		123456	12-456	
10 Z1	ZN 110		12345-	12-45-	
11 Z1	ZN 111		1234-6	12-4-6	
12 Z1	ZN 112		1234--	12-4--	
13 Z1	ZN 113		123-56	12--56	
14 Z1	ZN 114		123-5-	12--5-	
15 Z1	ZN 115		123--6	12--6	
16 Z1	ZN 116		123---	12----	

MASTER ZONE 2 File Name: 8112P: _____
 Protection: _____
 Notes: _____

D5100 Display	D1252 Display	PTEXT	8126 Switches		LOCATION
			Hrzntl	Vert	
MSTR 2	ZN 200				
1 Z2	ZN 201		12-456	1-3456	
2 Z2	ZN 202		12-45-	1-345-	
3 Z2	ZN 203		12-4-6	1-34-6	
4 Z2	ZN 204		12-4--	1-34--	
5 Z2	ZN 205		12--56	1-3-56	
6 Z2	ZN 206		12--5-	1-3-5-	
7 Z2	ZN 207		12--6	1-3--6	
8 Z2	ZN 208		12---	1-3--	
9 Z2	ZN 209		12-456	1--456	
10 Z2	ZN 210		12-45-	1--45-	
11 Z2	ZN 211		12-4-6	1--4-6	
12 Z2	ZN 212		12-4--	1--4--	
13 Z2	ZN 213		12--56	1---56	
14 Z2	ZN 214		12--5-	1---5-	
15 Z2	ZN 215		12--6	1----6	
16 Z2	ZN 216		12----	1-----	

MASTER ZONE 3 File Name: 8112P: _____
 Protection: _____
 Notes: _____

D5100 Display	D1252 Display	PTEXT	8126 Switches		LOCATION
			Hrzntl	Vert	
MSTR 3	ZN 300				
1 Z3	ZN 301		1-3456	-23456	
2 Z3	ZN 302		1-345-	-2345-	
3 Z3	ZN 303		1-34-6	-234-6	
4 Z3	ZN 304		1-34--	-234--	
5 Z3	ZN 305		1-3-56	-23-56	
6 Z3	ZN 306		1-3-5-	-23-5-	
7 Z3	ZN 307		1-3--6	-23--6	
8 Z3	ZN 308		1-3---	-23---	
9 Z3	ZN 309		1-3456	-2-456	
10 Z3	ZN 310		1-345-	-2-45-	
11 Z3	ZN 311		1-34-6	-2-4-6	
12 Z3	ZN 312		1-34--	-2-4--	
13 Z3	ZN 313		1-3-56	-2--56	
14 Z3	ZN 314		1-3-5-	-2--5-	
15 Z3	ZN 315		1-3--6	-2--6	
16 Z3	ZN 316		1-3---	-2----	

MASTER ZONE 4 File Name: 8112P: _____
 Protection: _____
 Notes: _____

D5100 Display	D1252 Display	PTEXT	8126 Switches		LOCATION
			Hrzntl	Vert	
MSTR 4	ZN 400				
1 Z4	ZN 401		1--456	--3456	
2 Z4	ZN 402		1--45-	--345-	
3 Z4	ZN 403		1--4-6	--34-6	
4 Z4	ZN 404		1--4--	--34--	
5 Z4	ZN 405		1---56	--3-56	
6 Z4	ZN 406		1---5-	--3-5-	
7 Z4	ZN 407		1----6	--3--6	
8 Z4	ZN 408		1-----	--3---	
9 Z4	ZN 409		1--456	---456	
10 Z4	ZN 410		1--45-	---45-	
11 Z4	ZN 411		1--4-6	---4-6	
12 Z4	ZN 412		1--4--	---4--	
13 Z4	ZN 413		1---56	----56	
14 Z4	ZN 414		1---5-	----5-	
15 Z4	ZN 415		1----6	----6	
16 Z4	ZN 416		1-----	-----	

MASTER ZONE 5 File Name: 8112P: _____
 Protection: _____
 Notes: _____

D5100 Display	D1252 Display	PTEXT	8126 Switches		LOCATION
			Hzrntl	Vert	
MSTR 5	ZN 500				
1 Z5	ZN 501		-23456	123456	
2 Z5	ZN 502		-2345-	12345-	
3 Z5	ZN 503		-234-6	1234-6	
4 Z5	ZN 504		-234--	1234--	
5 Z5	ZN 505		-23-56	123-56	
6 Z5	ZN 506		-23-5-	123-5-	
7 Z5	ZN 507		-23--6	123--6	
8 Z5	ZN 508		-23---	--321	
9 Z5	ZN 509		-23456	12-456	
10 Z5	ZN 510		-2345-	12-45-	
11 Z5	ZN 511		-234-6	12-4-6	
12 Z5	ZN 512		-234--	12-4--	
13 Z5	ZN 513		-23-56	12--56	
14 Z5	ZN 514		-23-5-	12--5-	
15 Z5	ZN 515		-23--6	12---6	
16 Z5	ZN 516		-23---	12----	

MASTER ZONE 6 File Name: 8112P: _____
 Protection: _____
 Notes: _____

D5100 Display	D1252 Display	PTEXT	8126 Switches		LOCATION
			Hzrntl	Vert	
MSTR 6	ZN 600				
1 Z6	ZN 601		-2-456	1-3456	
2 Z6	ZN 602		-2-45-	1-345-	
3 Z6	ZN 603		-2-4-6	1-34-6	
4 Z6	ZN 604		-2-4--	1-34--	
5 Z6	ZN 605		-2--56	1-3-56	
6 Z6	ZN 606		-2--5-	1-3-5-	
7 Z6	ZN 607		-2---6	1-3--6	
8 Z6	ZN 608		-2----	---3-1	
9 Z6	ZN 609		-2-456	1--456	
10 Z6	ZN 610		-2-45-	1--45-	
11 Z6	ZN 611		-2-4-6	1--4-6	
12 Z6	ZN 612		-2-4--	1--4--	
13 Z6	ZN 613		-2--56	1---56	
14 Z6	ZN 614		-2--5-	1---5-	
15 Z6	ZN 615		-2---6	1----6	
16 Z6	ZN 616		-2----	1-----	

MASTER ZONE 7 File Name: 8112P: _____
 Protection: _____
 Notes: _____

D5100 Display	D1252 Display	PTEXT	8126 Switches		LOCATION
			Hzrntl	Vert	
MSTR 7	ZN 700				
1 Z7	ZN 701		--3456	-23456	
2 Z7	ZN 702		--345-	-2345-	
3 Z7	ZN 703		--34-6	-234-6	
4 Z7	ZN 704		--34--	-234--	
5 Z7	ZN 705		--3-56	-23-56	
6 Z7	ZN 706		--3-5-	-23-5-	
7 Z7	ZN 707		--3--6	-23--6	
8 Z7	ZN 708		--3---	-23---	
9 Z7	ZN 709		--3456	-2-456	
10 Z7	ZN 710		--345-	-2-45-	
11 Z7	ZN 711		--34-6	-2-4-6	
12 Z7	ZN 712		--34--	-2-4--	
13 Z7	ZN 713		--3-56	-2--56	
14 Z7	ZN 714		--3-5-	-2--5-	
15 Z7	ZN 715		--3--6	-2---6	
16 Z7	ZN 716		--3---	-2----	

MASTER ZONE 8 File Name: 8112P: _____
 Protection: _____
 Notes: _____

D5100 Display	D1252 Display	PTEXT	8126 Switches		LOCATION
			Hzrntl	Vert	
MSTR 8	ZN 800				
1 Z8	ZN 801		---456	--3456	
2 Z8	ZN 802		---45-	--345-	
3 Z8	ZN 803		---4-6	--34-6	
4 Z8	ZN 804		---4--	--34--	
5 Z8	ZN 805		----56	--3-56	
6 Z8	ZN 806		----5-	--3-5-	
7 Z8	ZN 807		----6	--3--6	
8 Z8	ZN 808			--3---	
9 Z8	ZN 809		---456	---456	
10 Z8	ZN 810		---45-	---45-	
11 Z8	ZN 811		---4-6	---4-6	
12 Z8	ZN 812		---4--	---4--	
13 Z8	ZN 813		----56	----56	
14 Z8	ZN 814		----5-	----5-	
15 Z8	ZN 815		----6	----6	
16 Z8	ZN 816	Not Used			

SYSTEM NOTES: _____

8112 ZONEX Worksheet

The following instructions are provided to define and record individual ZONEX points. On the reverse of this page is a blank worksheet.

PROTECTION	NUMBER OF POINTS	HORIZONTAL		VERTICAL		ZONES NEEDING POPITS
		ZONES NEEDED	ZONE ASGNMT	ZONES NEEDED	ZONE ASGNMT	
FIRE ①	1 ②	1 ③		1 ④	(100) ⑥	0 ⑦
PANIC	1	1		1	(200)	0
DELAY	1	1		1	(300)	0
SUB CONTROL	1	1		1	(400)	0
INSTANT PERIM.	23	3		2	(500,600)	2
INTERIOR	11	2		1	(700)	1
TOTAL	38	9* ⑤		7 ⑤		3**

Figure 1: Work Chart Example

Define Your Points Of Protection

- List the types of protection you are going to be installing (ie.; fire, panic, delay, etc.). See Figure 1 for an example.
- Insert the number of points that will be installed for each type of protection (ie.; for Instant Perimeter, count all doors and windows etc.).
- Insert the number of Horizontal zones needed for the number of Points listed. To do this, divide the number of Points by 8.
- Insert the number of Vertical zones needed for the number of Points listed. To do this, divide the number of Points by 16.
- Add the Total number of zones required for the horizontal mode and the vertical mode.
 - * If the number of zones is more than 8, an additional POPEX module will be needed.
- Determine which mode will be used and assign Master Zones. In this example the Vertical Mode will be used with a total of 7 Master Zones (100-700).
- Determine the number of POPIT modules needed for each type of protection. Figure 1 reflects the number of POPITs needed for the Vertical mode.

** If the number of zones with POPIT modules is more than 4, an additional POPEX module will be needed.

Address POPITS

- Using Label Sheet 79-04252-001 thru 003 set the switches on each POPIT module (ie.; ZN 101 will have switches 654321 all ON).
- Attach the appropriate label to each POPIT module.

Draw a Floorplan

- Illustrate every point of protection of the map with its appropriate three digit address (ie.; 501, 502 604, etc.). See Figure 2 for a sample drawing. In the sample you can see that the points were assigned in a clock wise manner starting at the D8112 panel.
- Illustrate the approximate location of where the Backbone(s) will run. Backbones are used to connect all of the points of protection included in one master zone. In Figure 2 the Backbone connects all of the points belonging to Master Zone 700.

Fill In the 8112 ZONEX System Program/

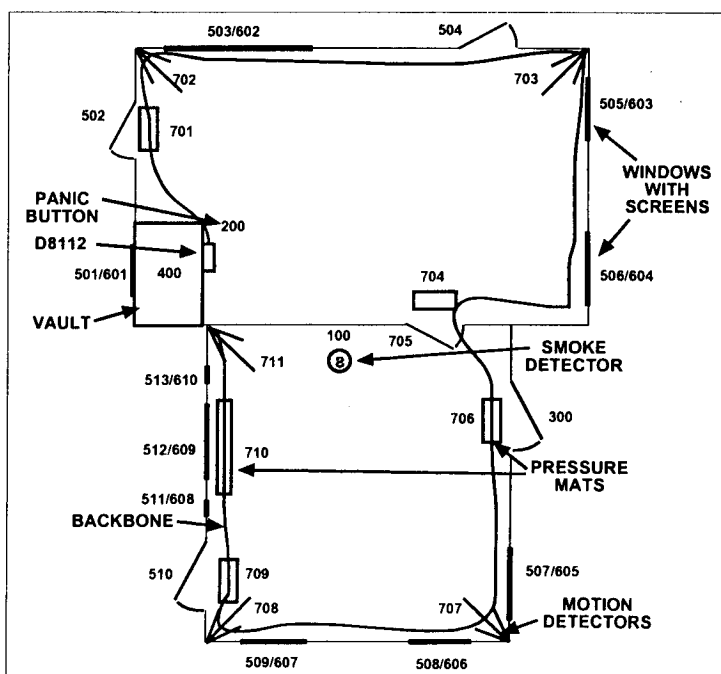


Figure 2: Floor Plan Example

PROTECTION	NUMBER OF POINTS	HORIZONTAL		VERTICAL		ZONES NEEDING POPITS
		ZONES NEEDED	ZONE ASGNMT	ZONES NEEDED	ZONE ASGNMT	

Figure 3: Work Chart

Figure 4: Floor Plan



Radionics[®]

P.O. BOX 80012, SALINAS CA 93912-0012